

# Movie Maker 2

## Academy

### Day 2 - Video

Educational Technology Center

Planning the Movie Maker Project .....	2	Transitions.....	6
Location of Files .....	2	Selecting a Transition .....	6
Sources of Videos .....	2	Inserting a Transition .....	6
File Format Types .....	2	Previewing a Transition in the Movie.....	6
The Internet.....	2	Removing a Transition.....	6
Captured from Analog or Digital Source	2	Video Effects .....	6
Capturing Video.....	3	Video Effects for Video Clips.....	6
Capturing Video from a Digital Video		Selecting an Effect .....	7
Camera .....	3	Inserting an Effect.....	7
Capturing Live Video with a Web Cam .	4	Previewing an Effect in the Movie .....	7
Importing Video.....	4	Removing a Transition.....	7
Editing Video Clips.....	5	Using the Timeline.....	7
Analyzing a Clip .....	5	Tracks in the Timeline .....	7
Deleting a Clip .....	5	Inserting Clips.....	7
Playing a Clip.....	5	Inserting Multiple Clips .....	7
Copying a Clip .....	5	Arranging the Clips on the Timeline .....	7
Splitting a Clip .....	5	Trimming Clips.....	8
Snapping a Picture of a Frame .....	5	Changing the Time Scale .....	8
Combining Clips .....	5	Controlling the Video .....	8
Using the Storyboard .....	6	Saving a Project .....	8
Inserting Clips.....	6	Previewing the Movie.....	9
Inserting Multiple Clips .....	6	Saving the Movie .....	9
Arranging Clips.....	6	Playing the Movie.....	9
Deleting Clips .....	6		

## Planning the Movie Maker Project

- Planning saves hours of time. It keeps the project focused.
  - Purpose of the project?
  - Target completion date of the project?
  - Equipment needed for the project?
- Storyboard the project.
- Review the storyboard with others for their ideas, suggestions, and corrections.

## Location of Files

- Changing the location of the original files after they have been imported into **Windows Movie Maker** will break the connection.
- When a file has been moved, the **Preview Pane** will display a large red X instead of the media.
- Double click on the clip and browse to the new location to reconnect the moved file.
- Click on the desired file.
- Click on **OK**.

## Sources of Videos

### *File Format Types*

- The supported video file formats are: .asf, .avi, .m1v, .mp2, .mpe, .mpeg, .mpg, .mpv2, .wm, and .wmv.
- The most common ones are .avi, .mpeg, and .wmv.
- **Note** - Streaming media such as movie files played through RealOne cannot be used.
- **Note 2** – Quicktime format movies (.mov) cannot be used in **Windows Movie Maker** unless they are converted to another format.

### *The Internet*

- Check the copyright information of the video. Do not use video clips without permission.
- Search the Internet for educationally appropriate video clips using a search engine.
- Video clips are available through **eMedia** from **Pioneer Library** at <http://pioneer.uen.org> .
- Once you have found a movie file:
  - Right click on the link to the video clip.
  - Choose **Save Target As....**
  - Navigate to the location where the clip will be saved.
  - Check the name of the clip.
  - Click on the **Save** button.

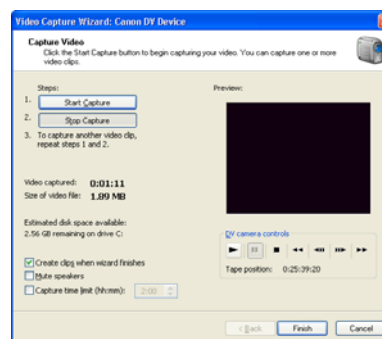
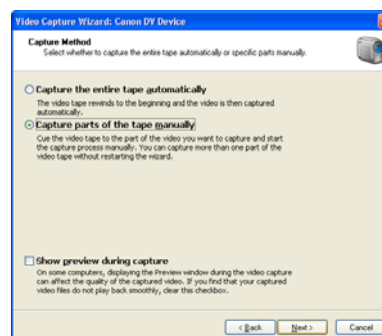
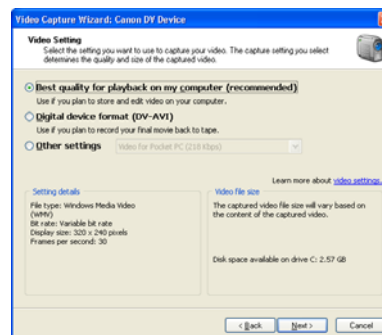
### *Captured from Analog or Digital Source*

- Videos can be captured from analog (VHS or camcorder tapes) or digital sources (digital camera tapes).
- Analog sources, such as VHS tapes, must be converted to digital format with a capture device.
- Capture devices include capture cards and some digital cameras.
- Digital sources, such as from a digital camera, can be imported directly. (See camera instructions.)
- Refer to the section on **Capturing Video** for more information.

## Capturing Video

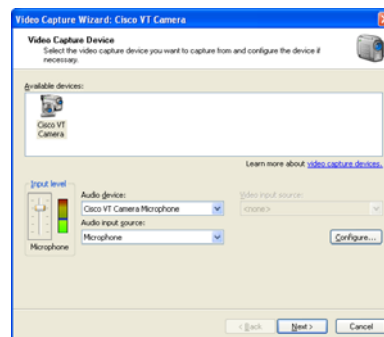
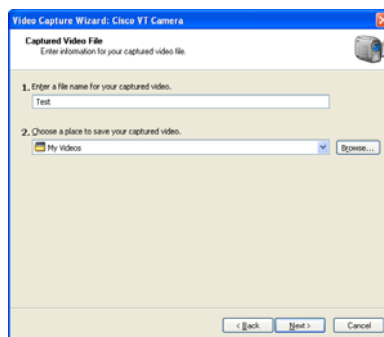
### Capturing Video from a Digital Video Camera

- Capturing digital video can be done through a capture card or through Firewire (IEEE 1394).
- Connect the digital video source such as the digital video camera to the Firewire (IEEE 1394) port.
- In the **Capture Video** area of the **Task Pane**, click on **Capture from video device**.
- The **Video Capture Wizard** begins.
- Give the video a name.
- Specify a location by clicking on the **Browse** button and then navigate to the desired location.
- Click on the **Next** button.
- Choose a Video Setting:
  - **Best quality for playback on my computer** is the recommended setting.
  - **Digital device format (DV-AVI)** is suggested for the highest quality.
  - **Other settings** allows the user to choose for video output to Pocket PC or for distribution over a variety of network and Internet settings.
- Click on the **Next** button.
- Choose **Capture the entire tape automatically** only if there is space on the hard drive and the entire is desired.
- Choose **Capture parts of the tape manually** for most situations.
- Click on the **Next** button.
- Below the **Start Capture** and **Stop Capture** buttons is information about the amount of video captured, the size of the video file, and the estimated disk space on the C: drive.
  - Notice the amount of space available on the C: drive.
  - Do not use all of the available space.
- Be sure that **Create clips when wizard finishes** is checked.
- Use the DV camera controls in the window to position the DV tape at the beginning of the video to be captured.
- Reading left to right, the controls are **Play**, **Stop** (which also rewinds the tape to the beginning), **Pause**, **Rewind**, **Previous Frame**, **Next Frame**, and **Fast Forward**.
- The **Previous Frame** and **Next Frame** buttons allow for precise positioning.
- Click on the **Start Capture** button. (The tape will play and the computer will capture the video. Keep an eye on the size of the video file.)
- To see the video being captured, look in the view finder or on the screen of the camera.
- At the end of the desired clip, click on the **Stop Capture** button.
- Several clips can be captured by positioning the tape, clicking on the **Start Capture** button, capturing the segment, and then clicking on the **Stop Capture** button.
- Click on the **Finish** button.
- The video clip is brought into **Windows Movie Maker** and divided into clips.

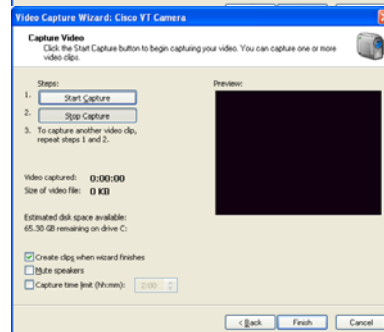


## Capturing Live Video with a Web Cam

- If a web cam is connected to the computer, it can be used to capture video directly to the computer.
- In the **Capture Video** area of the **Task Pane**, click on **Capture from video device**.
- In the **Available devices**: box, click on the desired camera.
- Test the microphone and adjust the input level in the **Input level** box.
- If necessary or desired, click on the **Configure** button and make the necessary adjustments.
- Click on the **Next** button.
- Enter a title for the captured video.
- Click on the **Browse** button and the folder the video is to be saved to.
  - Create a new folder for the video if desired.
- Click on the **Next** button.
- Choose a Video Setting:
  - **Best quality for playback on my computer** is the recommended setting.
  - **Digital device format (DV-AVI)** is suggested for the highest quality.
  - **Other settings** allows the user to choose for video output to Pocket PC or for distribution over a variety of network and Internet settings.
- Click on the **Next** button.
- Below the **Start Capture** and **Stop Capture** buttons is information about the amount of video captured, the size of the video file, and the estimated disk space on the C: drive.
  - Notice the amount of space available on the C: drive.
  - Do not use all of the available space.
- Be sure that **Create clips when wizard finishes** is checked.
- Click on the **Start Capture** button to begin recording.
- The video being recorded appears on the computer screen.
- At the end of the recording, click on the **Stop Capture** button.
- Click on the **Finish** button.
- The video clip is brought into **Windows Movie Maker** and divided into clips.



navigate to the location of



## Importing Video

- In the **Capture Video** area of the **Task Pane**, click on **Import video**.
- Navigate to the location of the video clip.
- Select the video clip.
- To select a whole list of videos,
  - Click on the first video in the list.
  - Hold down the **Shift** key.
  - Click on the last video in the list.
- Click on **Import**.
- When video clips are imported, a separate folder is created in the Collection and the clip is split into separate parts where the computer detects a change in scene or background.

## Editing Video Clips

### Analyzing a Clip

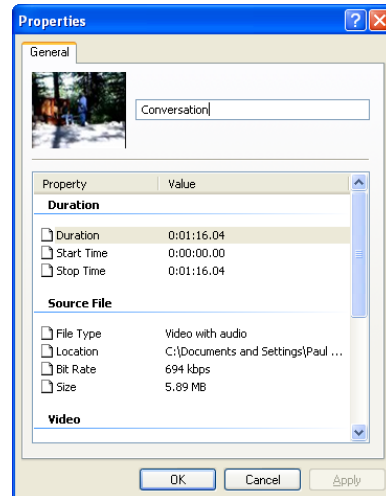
- Right click on the clip in the **Preview Pane**.
- Choose **Properties**.
- Scroll down as needed to locate the desired information.

### Deleting a Clip

- Click on the clip in the **Preview Pane**.
- Press the **Delete** key.

### Playing a Clip

- Click on the clip in the **Preview Pane**.
- Click on the **Play** button on the **Monitor**.
- **Note** – Not all video clips will preview in the **Monitor** from the **Preview Pane**.

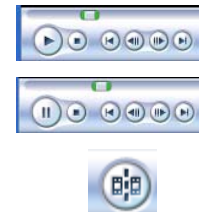


### Copying a Clip

- Click on the clip in the **Preview Pane**.
- On the **Menu Bar**, click on **Edit → Copy**.
- Click where the clip is to be pasted.
- On the **Menu Bar**, click on **Edit → Paste**.

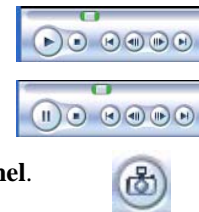
### Splitting a Clip

- Click on the clip in the **Preview Pane**.
- Click on the **Play** button in the **Monitor**.
- Click on the **Pause** button at the point where the clip should be split.
- Use the **Next Frame** and **Previous Frame** buttons to find the exact location.
- Click on the **Split Clip** button on the right side of the **Monitor Control Panel**.



### Snapping a Picture of a Frame

- A picture can be snapped of an individual frame of the video clip.
- Click on the clip in the **Preview Pane**.
- Click on the **Play** button in the **Monitor**.
- Click on the **Pause** button when the desired frame is shown.
- Use the **Next Frame** and **Previous Frame** buttons to find the exact location.
- Click on the **Take Picture** button on the right side of the **Monitor Control Panel**.
- Navigate to the desired location to save the picture.
- Type a name for the picture or leave the name assigned by the program.
- Click on the **Save** button.
- The picture is imported into the collection of the video file.



### Combining Clips

- Select both clips either by clicking and dragging or by **Control** clicking.
- Right click on one of the clips and choose **Combine**.
- **Note** – Clips that are not sequential in the original imported movie may not be combined.

## Using the Storyboard

### *Inserting Clips*

- Locate the clip in the **Preview Pane**.
- Click and drag the clip to the desired location.

### *Inserting Multiple Clips*

- Click on the first desired clip in the **Preview Pane**.
- Hold down the **Shift** key and click on the last clip.
- Add or remove clips to the selection by holding down the **Control** key while clicking on the clip.
- Click on one of the selected clips and drag them to the desired location.

### *Arranging Clips*

- Click and drag the clip to the desired location.

### *Deleting Clips*

- Click on the clip in the **Storyboard**.
- Press the **Delete** key.

## Transitions

### *Selecting a Transition*

- On the **Menu Bar**, click on **View → Video Transitions**.
- Locate the desired transition.
- Double click on the transition.
- The transition will be demonstrated in the **Monitor**.

### *Inserting a Transition*

- Change to the **Storyboard** if it is not showing.
- Scroll through the **Storyboard** to find the location to place the transition.
- Click and drag the transition from the **Preview Pane** to the box between the desired clips.

### *Previewing a Transition in the Movie*

- Click on the transition in the **Storyboard**.
- Click on the **Play** button on the **Monitor**.

### *Removing a Transition*

- Click on the transition in the **Storyboard**.
- Press the **Delete** key.

## Video Effects

### *Video Effects for Video Clips*

- Some of the video effects are specifically designed for use with video clips.
- **Slow Down, Half** plays the video clip at half the normal speed. Applying the effect twice slows the video clip to one quarter speed.
- **Speed Up, Double** plays the video clip at twice the normal speed. Applying the effect twice plays the video clip at quadruple speed.

### **Selecting an Effect**

- On the **Menu Bar**, click on **View** → **Video Effects**.
- Locate the desired effect.
- Double click on the effect.
- The effect will be demonstrated in the **Monitor**.

### **Inserting an Effect**

- Change to the **Storyboard** if it is not showing.
- Scroll through the **Storyboard** to find the clip the effect will be placed on.
- Click and drag the effect from the **Preview Pane** to the desired clip.

### **Previewing an Effect in the Movie**

- Click on the effect in the bottom left corner of the movie clip in the **Storyboard**.
- Click on the **Play** button on the **Monitor**.

### **Removing a Transition**

- Click on the effect in the bottom left corner of the movie clip in the **Storyboard**.
- Press the **Delete** key.

## **Using the Timeline**

### **Tracks in the Timeline**

- The **Video Track** contains the video clips on the **Timeline**.
- Click on the plus in front of **Video** at the beginning of the **Timeline** to reveal the transitions and the audio associated with the video clips.
- The **Audio/Music Track** contains inserted audio and music clips.
- The **Title Overlay Track** allows the Title to be overlaid on the Video Track so that both show at the same time.

### **Inserting Clips**

- Locate the clip in the **Preview Pane**.
- Click and drag the clip to the desired location.

### **Inserting Multiple Clips**

- Click on the first desired clip in the **Preview Pane**.
- Hold down the **Shift** key and click on the last clip.
- Add or remove clips from the selection by holding down the **Control** key while clicking on the clip.
- Click on one of the selected clips and drag them to the desired location.

### **Arranging the Clips on the Timeline**

- Click on the clip and drag it to the desired location on the **Timeline**.
- **Note** – It is easier to do in the **Storyboard** than in the **Timeline**.

## Trimming Clips

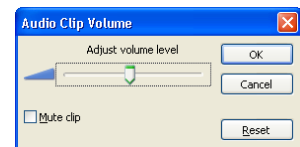
- Trimming the front of the clip.
  - Click on the clip in the **Timeline**.
  - Place the cursor over the front of the clip. (Notice the red double-headed arrow.)
  - Click and drag to trim the front of the clip.
- Trimming the back of the clip.
  - Click on the clip in the **Timeline**.
  - Place the cursor over the back of the clip. (Notice the red double-headed arrow.)
  - Click and drag to trim the back of the file.

## Changing the Time Scale

- Click on the magnifying glass with the + to increase the detail of the time scale (see the fine details),
- Click on the magnifying glass with the – to decrease the detail of the time scale (see more of the movie and less detail).

## Controlling the Video

- **Trimming the front of the clip.**
  - Click on the clip in the **Timeline**.
  - Place the cursor over the front of the clip. (Notice the red double-headed arrow.)
  - Click and drag to trim the front of the clip.
- **Trimming the end of the clip.**
  - Click on the clip in the **Timeline**.
  - Place the cursor over the end of the clip. (Notice the red double-headed arrow.)
  - Click and drag to trim the back of the file.
- **Audio Effects**
  - Right click on the audio/music file on the **Timeline**.
  - Choose one of the effects: Mute, Fade In, or Fade Out.
- **Adjusting the Volume of a Clip**
  - Right click on the audio/music file on the **Timeline**.
  - Choose **Volume**.
  - Click and drag the slider to proper volume.
  - Click on **OK**.
  - Notice that the **Reset** button will reset the volume to the original level.
- **Adjusting the Volume**
  - Change to the **Timeline** if it is not showing.
  - Right click on the desired sound clip and choose **Volume**. (Either the audio section of the video clip or the **Audio/Music Track**.)
  - Click and drag the slider to the desired location.
  - Click on **OK**.
  - **Note** – Balance the background music with the audio in the video this way.



## Saving a Project

- Projects should be saved in order to edit the movie in the future.
- On the **Menu Bar**, click on **File** → **Save Project**.
- Give the project a name.
- Click on the **Save** button.
- **Note** – The project is saved as a .MSWMM file. Only **Windows Movie Maker** can open this file.

## Previewing the Movie

- In the **Storyboard**, scroll to the beginning and click on the first clip,
- OR in the **Timeline**, slide the playback indicator to the beginning.
- Click on the **Play** button in the **Monitor**.
- To have the movie play full screen, click on the **Full Screen** button just above the **Play/Pause** button.
- To exit full screen, just click on the screen.

## Saving the Movie

- On the **Menu Bar**, click on **File** → **Save movie file**.
- Choose **My computer** to save the movie to the computer.
- Other choices are:
  - **Recordable CD** – Saves the movie to a recordable CD.
  - **E-mail** – Saves and sends the movie with the default e-mail program on the computer.
  - **The Web** – Saves and sends the movie to a video hosting provider.
  - **DV camera** – Record the movie to a tape in your DV camera for playback.
- Click on the **Next** button.
- Give the movie a name and select the location for the movie to be saved to.
- Click on the **Next** button.
- Choose the movie setting for saving the movie.
  - The default is to create a .wmv with a display size of 640 X 480 pixels.
  - To view more options, click on **Show more choices...**
    - To fit the movie to a smaller size for sending over email or posting on a website, choose **Best fit to file size:**
      - Use the up or down arrows to choose the desired file size.
      - **Note:** Reducing the file size reduces the display size.
    - **Other Settings:** These settings provide a range of possibilities.
      - Choose **DV-AVI** (the best quality and largest file size) if the movie will be burned to a DVD later.
- Note the estimated size of the movie.
- Click on the **Next** button.
- The movie is saved to the selected location. This may take some time, depending on the length of the movie and the movie settings selected above.
- Decide if the movie should be played.
- Click on the **Finish** button.

## Playing the Movie

- Open the **Windows Media Player** by clicking on **Start** → **All Programs** → **Windows Media Player**.
- On the **Menu Bar**, click on **File** → **Open...**
- Navigate to the location of the movie file.
- Click on the desired movie file.
- Click on the **Open** button.
- Click on the **Play** button to play the movie.
- Click and drag the sliding bar above the movie controls to move to different parts of the movie.
- While the movie is playing, hold down the **Alt** key and press the **Enter** key to go to **Full Screen Mode**. (Hold down the **Alt** key and press **Enter** to return to the previous size.)